

Sumica™

Sumica™

pearlescent pigments for plastics

  
**SUDARSHAN**  
Outshine. Outdo.

# Sumica™ pearlescent pigments for plastics



**Sumica Silver Super Fine  
4101 (1-15 μm)**



**Sumica Super Fine Silver  
41111 (1-15 μm)**



**Sumica Silver Silky Fine  
41124 (1-25 μm)**



**Sumica Silver Fine  
4191 (1-25 μm)**



**Sumica Bright Fine Silver  
41126 (5-25 μm)**



**Sumica Silver  
41134 (10-60 μm)**



**Sumica Silver  
41135 (10-60 μm)**



**Sumica Silver  
4179 (10-60 μm)**



**Sumica Bright Silver  
41137 (10-60 μm)**



**Sumica Silver Sparkle  
4194 (10-100 μm)**



**Sumica Silver Flash  
4152 (15-150 μm)**



**Sumica Silver Super Flash  
4153 (20-200 μm)**



**Sumica Iridescent Gold  
4195 (10-60 μm)**



**Sumica Iridescent Pink  
4196 (10-60 μm)**



**Sumica Iridescent Blue  
4197 (10-60 μm)**



**Sumica Bright Gold  
4199 (10-60 μm)**



**Sumica Bright Gold  
41633 (10-60 μm)**



**Sumica Medallion Gold  
PI 235 (10-60 μm)**



**Sumica Luminous Gold  
41634 (10-60 μm)**



**Sumica Supreme Gold  
SI 634 (10-60 μm)**

# Sumica™ pearlescent pigments for plastics



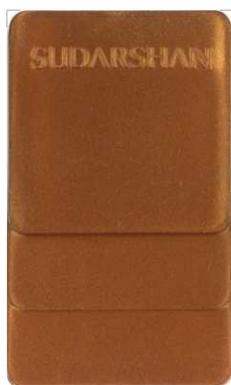
**Sumica Imperial Gold**  
41639 (10-60 μm)



**Sumica Sparkle Gold**  
4144 (10-100 μm)



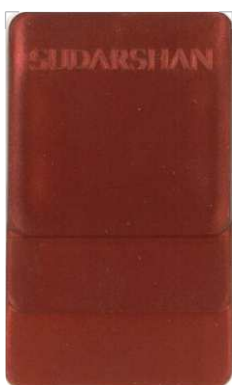
**Sumica Super Flash Gold**  
41665 (15-150 μm)



**Sumica Bronze**  
4964 (10-60 μm)



**Sumica Copper**  
4967 (10-60 μm)



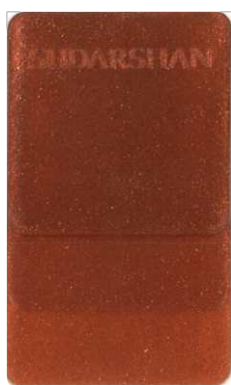
**Sumica Maroon**  
4969 (10-60 μm)



**Sumica Red**  
4970 (10-60 μm)



**Sumica Super Bronze**  
4974 (20-200 μm)



**Sumica Super Copper**  
4977 (20-200 μm)



**Sumica Super Maroon**  
4979 (20-200 μm)

Parameter	Value
Light fastness	8
Weather fastness	5
Heat stability	300°C
Application	Polyolefines, PVC, Engineering plastics

**Note:** Light fastness is assessed on 1-8 Blue Wool Scale where 1= poor and 8= Excellent  
Weather Fastness is assessed on 1-5 Gray Scale where 1= poor and 5= Excellent  
Heat stability is tested in HDPE polymer.

**Color Reproduction:** For technical reasons connected with color reproduction, the colors shown may not exactly match the pigment colors and do not represent a particular finish. Shades are reproduced with 2.0 % pigment loading in PP Polymer.

**Disclaimer:** The information included here is based on the reliable data generated by our laboratories. Since the Performance of a pigment also depends on the additives and polymers used, we recommend that customers should test the suitability of pigments in their end application. However, if we are provided with testing methods and samples, we would be glad to do the same. We will do our best to provide products of consistent quality, within the scope of the conditions of sale and delivery. Should, in spite of these precautions, any liability be established, the damage, if any, will be limited to the value of the goods delivered by us and used by you.

**Caution:** We provided a special series of pigments to be used in cosmetics and food packaging materials. Only products designed for these applications should be used. We do not recommend that any of our products are used in sensitive applications which may come in contact with internal body organs or body fluids.



## Contact Us

### Sudarshan Chemical Industries Limited

Registered Office:  
Eleven West Panchshil, 7<sup>th</sup> Floor, Survey No. 25,  
Near PAN Card Club Road, Baner, Pune - 411 069, India.  
Tel: +91 20 682 81 200  
Email: [contact@sudarshan.com](mailto:contact@sudarshan.com)

### Sudarshan Europe B.V.

Kingsfordweg 151  
1043 GR Amsterdam  
Tel: +31 (0)20 491 9417  
Email: [eu@sudarshan.com](mailto:eu@sudarshan.com)

### Sudarshan North America Inc.

76 N. Walnut Street  
Ridgewood, NJ  
USA 07450  
Tel: +1 201 652 2046  
Email: [ordersusa@sudarshan.com](mailto:ordersusa@sudarshan.com)

### Sudarshan Japan Limited

8F KS Building 4-5-20 Kojimachi  
Chiyoda-ku, Tokyo, Japan - 102 - 0083  
Tel: +81 3 6867 1484  
Email: [japan@sudarshan.com](mailto:japan@sudarshan.com)

### Sudarshan Mexico S. de R.L. de CV.

Av. Chalma s/n Oficina b-13  
Jardines de la Hacienda Sur, 54720  
Cuautitlan Izcalli, Edo. de Mexico, Mexico  
Tel: +52 55 2472 0246  
Email: [mexico@sudarshan.com](mailto:mexico@sudarshan.com)

### Sudarshan (Shanghai) Trading Company Limited

Room 1911, 19/F New Hualian Mansion,  
East Wing, No. 755 Middle Huaihai Road,  
Huangpu District, Shanghai, China, 200020  
Tel: +86 21 2215 7500, +86 21 2215 7559  
Email: [china@sudarshan.com](mailto:china@sudarshan.com)

